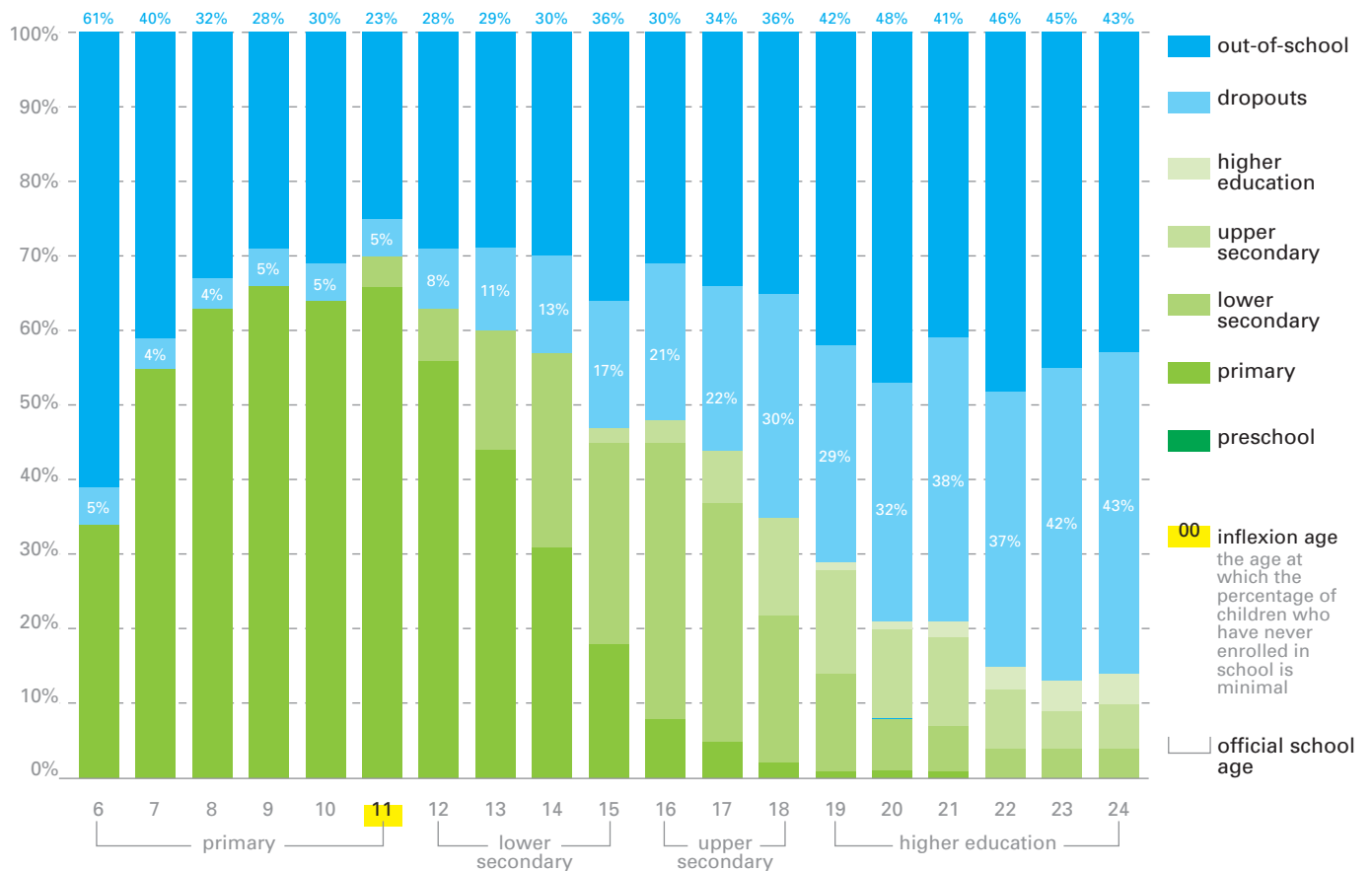




Source: Household Living Standards Survey (HLSS 2008) - Estimated population (UIS 2008)

1. Schooling profile by age



late entry

12% of 6-11 years enter school late

over-aged students in primary school

23% are at least 3 years older than the official age for their grade

over-aged students in final year of primary school

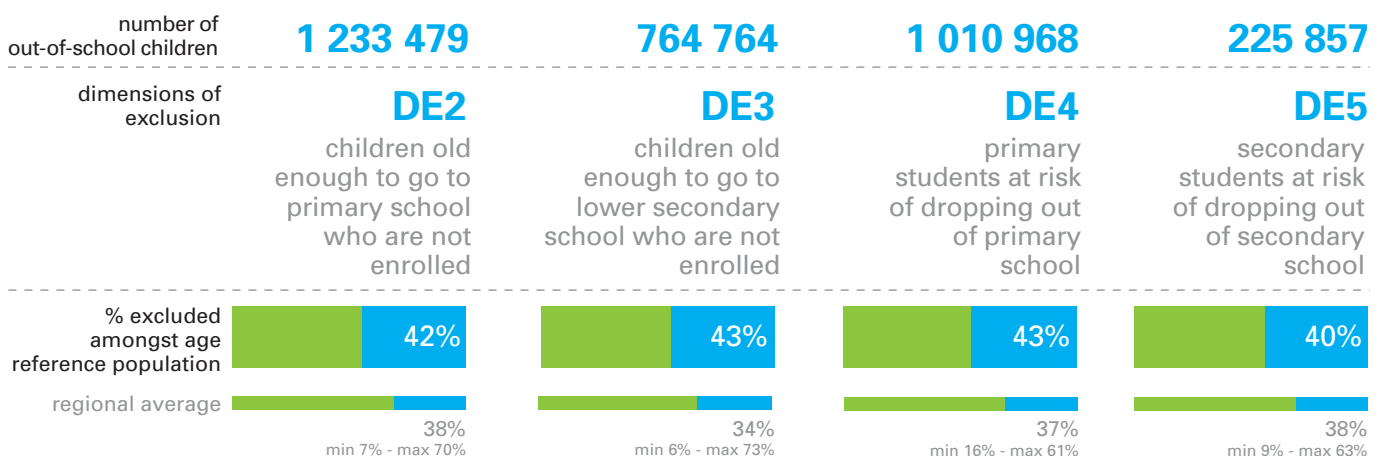
20% are at least 3 years older than the official age for their grade

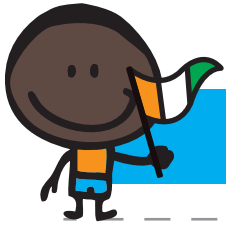
over-age adolescents

2% of primary school students are over 15 years



2. The 4 dimensions to consider

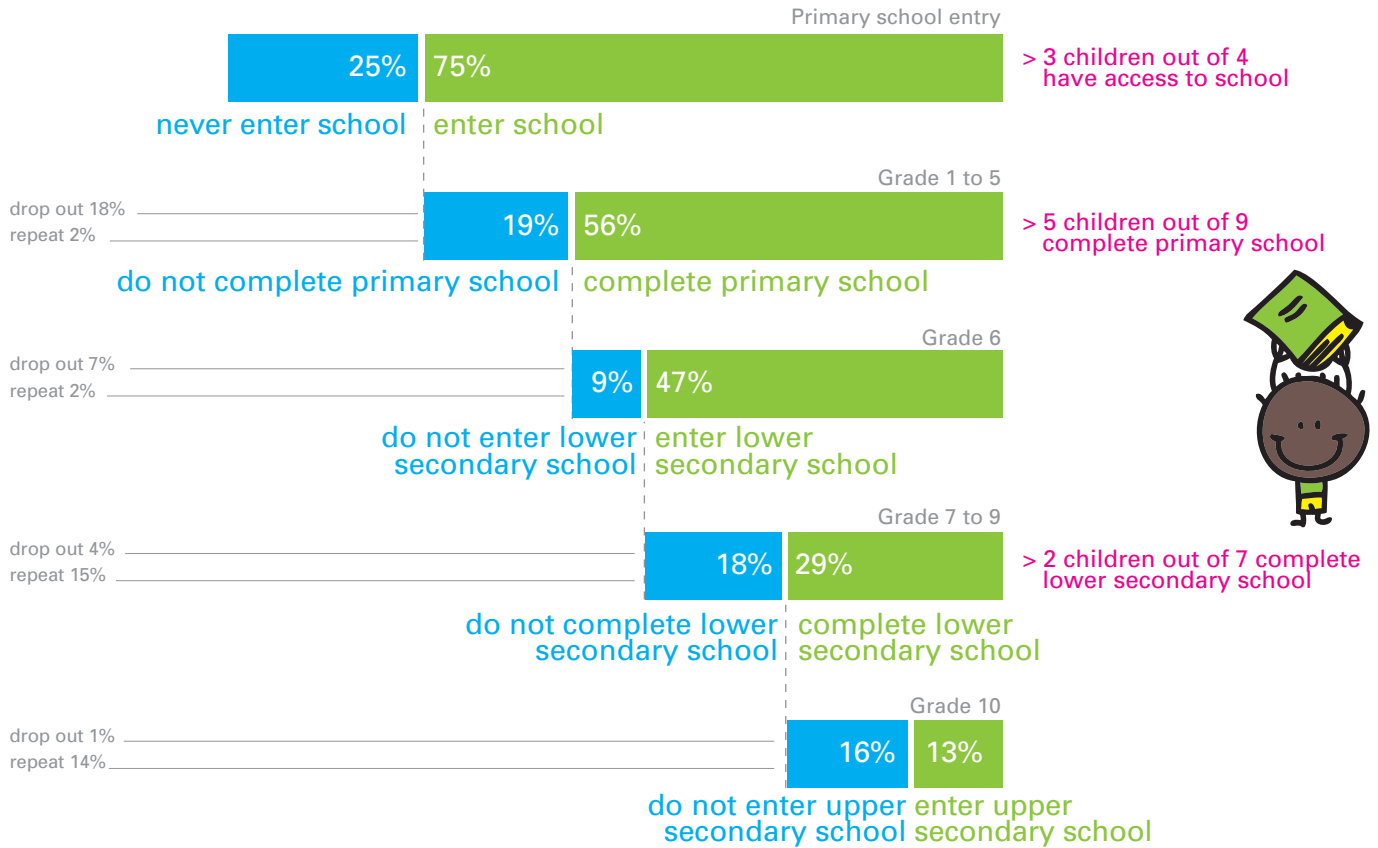




CÔTE D'IVOIRE

3. Schooling pathways of school aged children

Reference population: 17-18 years olds



4. Main factors of school exclusion

Reference population: 17-18 years olds

